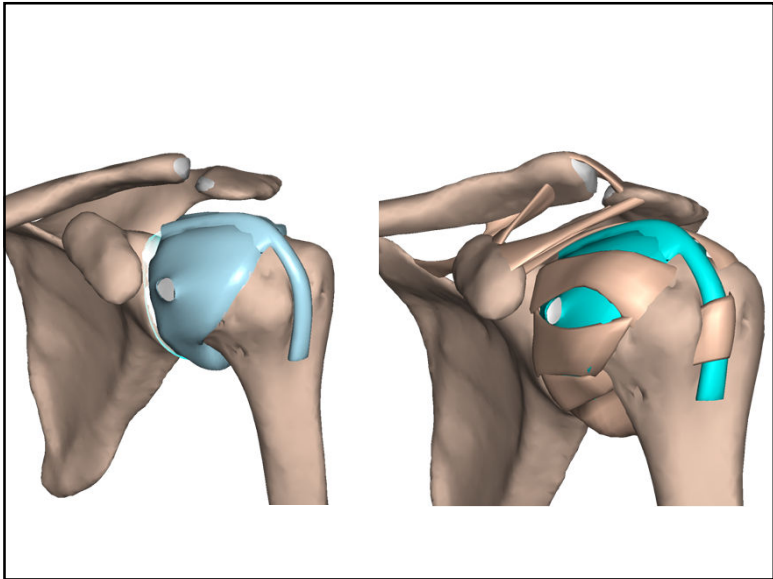
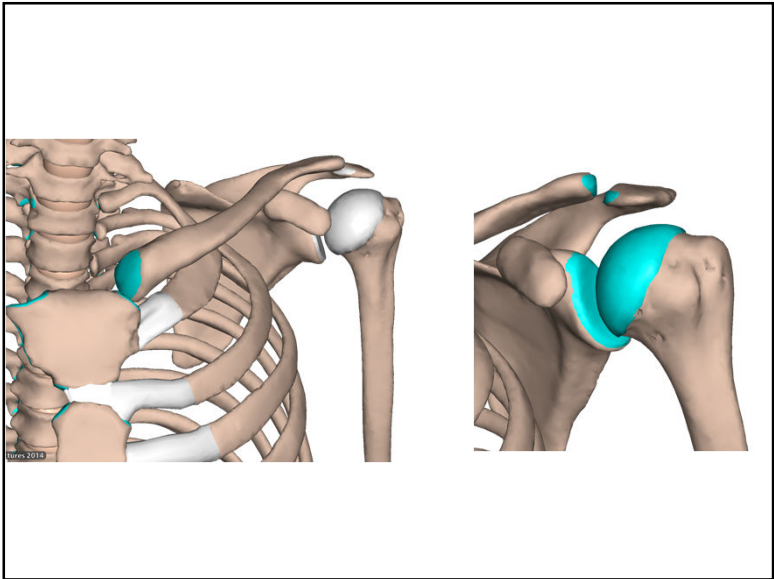
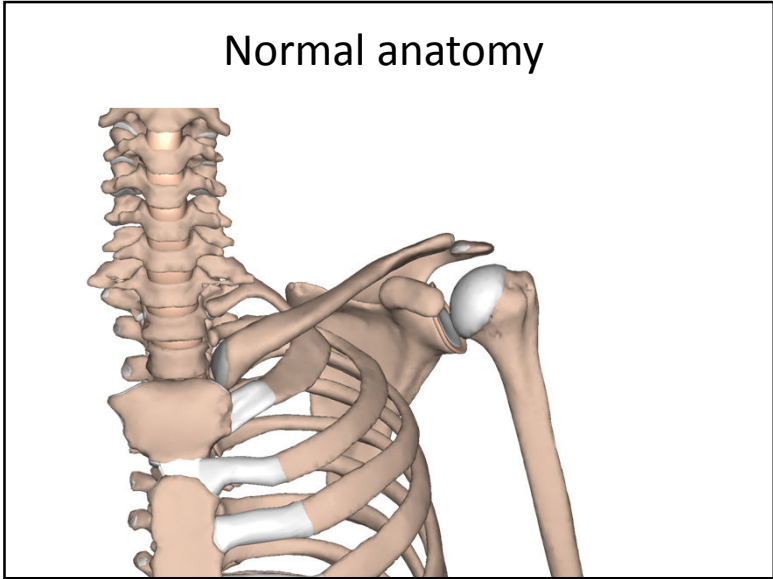
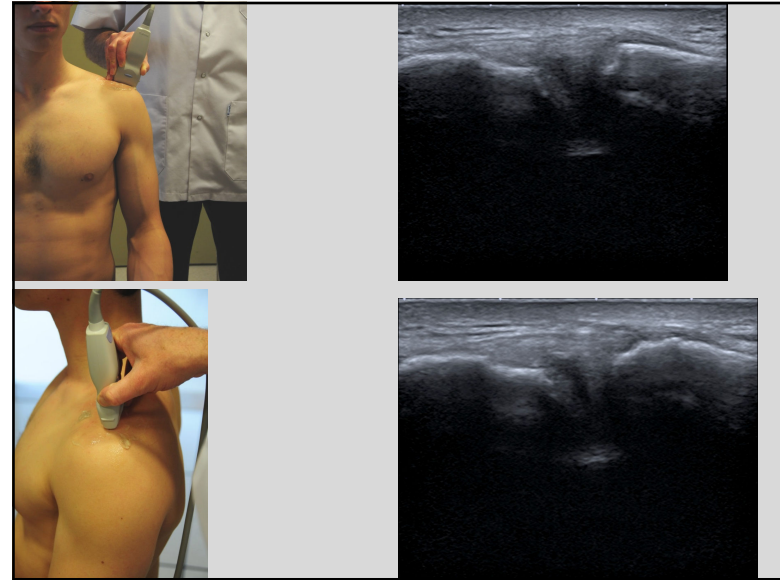


Shoulder



AC joint



AC Joint dynamic

- Cross test
- Piano key test

Cross Test



Piano key test



SC joint



Ligaments

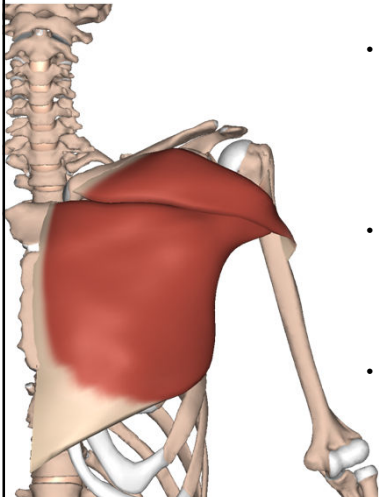
Ligaments

- IGHL anterior and posterior bands
axillary pouch
- MGHL
- SGHL
- Coracohumeral ligament
- Coracoacromial
- Coracoclavicular (Trapezoid, conoid)
- Superior transvers scapular ligament
- Transvers humeral ligament
- Acromioclavicular ligament

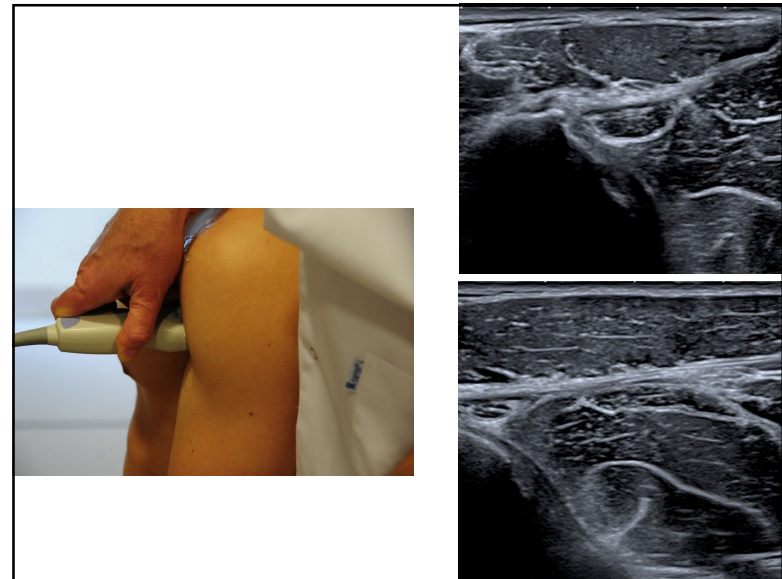
Ligaments

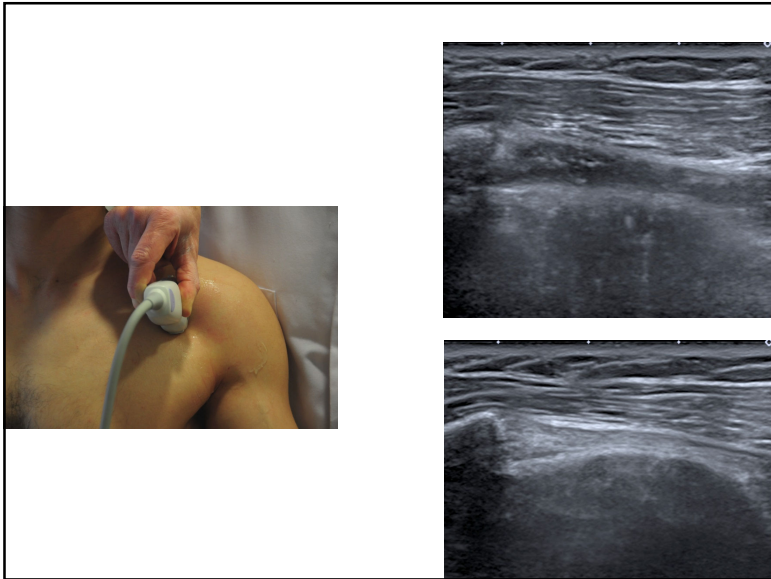
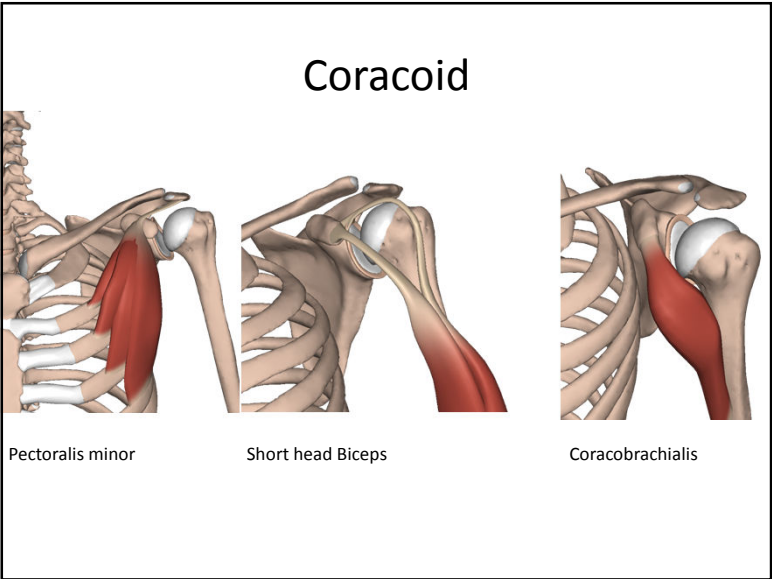
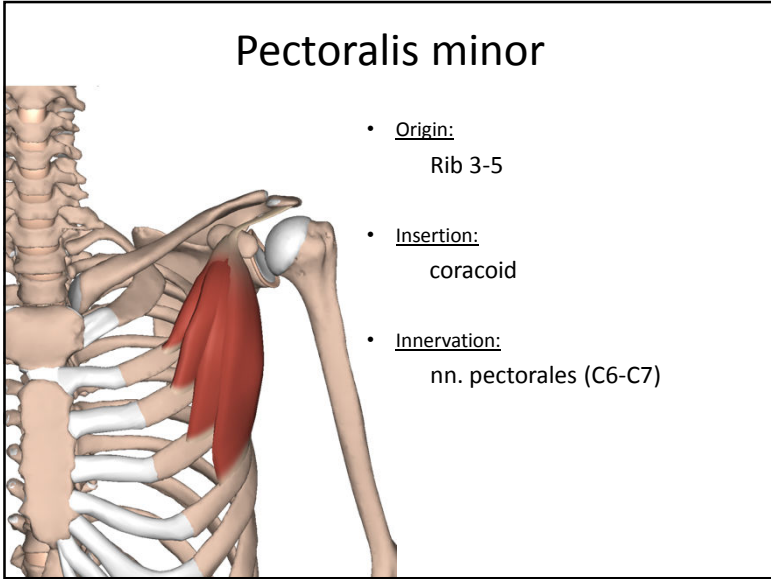
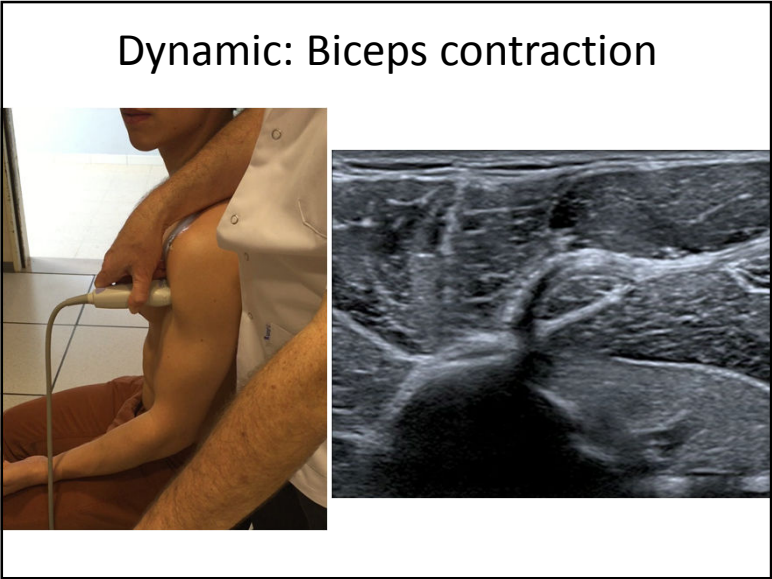
- IGHL anterior and posterior bands
axillary pouch
 - MGHL
 - SGHL
 - Coracohumeral ligament
 - Coracoacromial
 - Coracoclavicular (Trapezoid, conoid)
 - Superior transvers scapular ligament
 - Transvers humeral ligament
 - Acromioclavicular ligament
- Rotator Interval

Pectoralis major



- Origin:
p clavicularis
P sternocostalis (Rib 2-6)
P abdominalis (rectus)
- Insertion:
humerus : crista tuberculi
majoris
- Innervation:
nn. pectorales (C5-Th1)





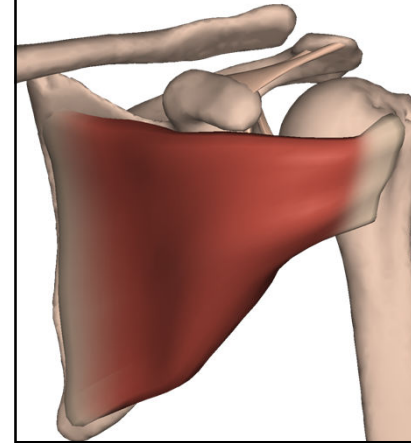
Rotator cuff muscles

- Subscapularis
- Supraspinatus
- Infraspinatus
- Teres minor

Rotator Interval

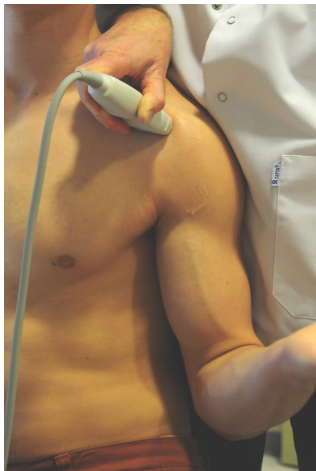
- LHB
- Biceps pulleys

Subscapularis

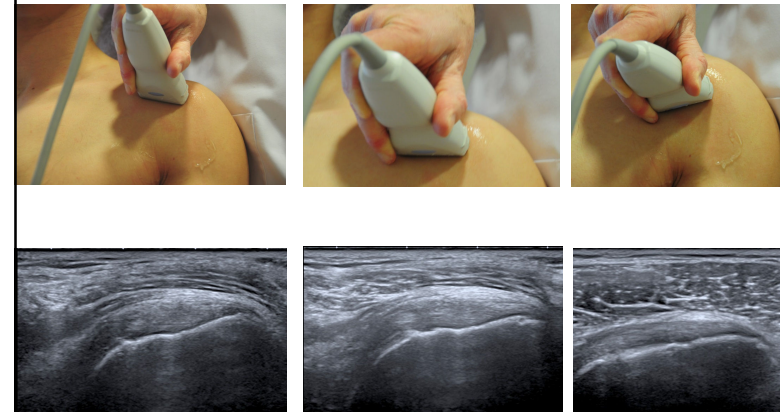


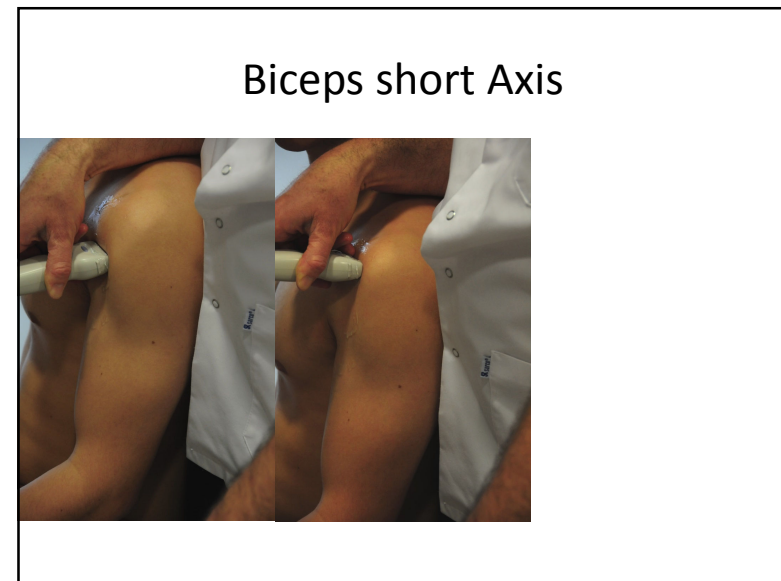
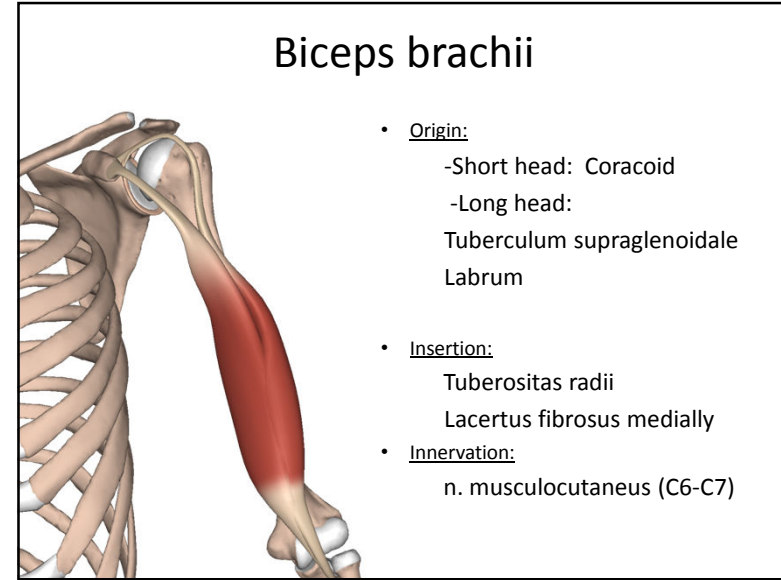
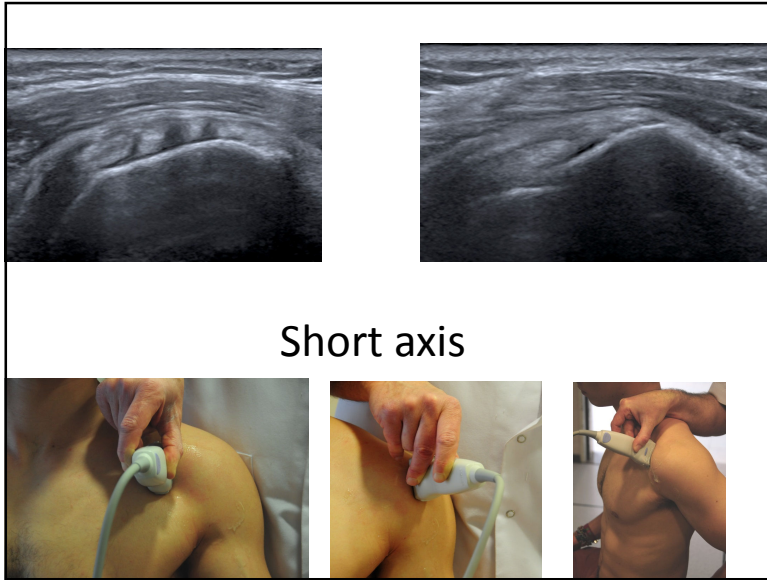
- Origin:
Fossa subscapularis
- Insertion:
Minor tubercle
- Innervation:
n. subscapularis (C5-C8)

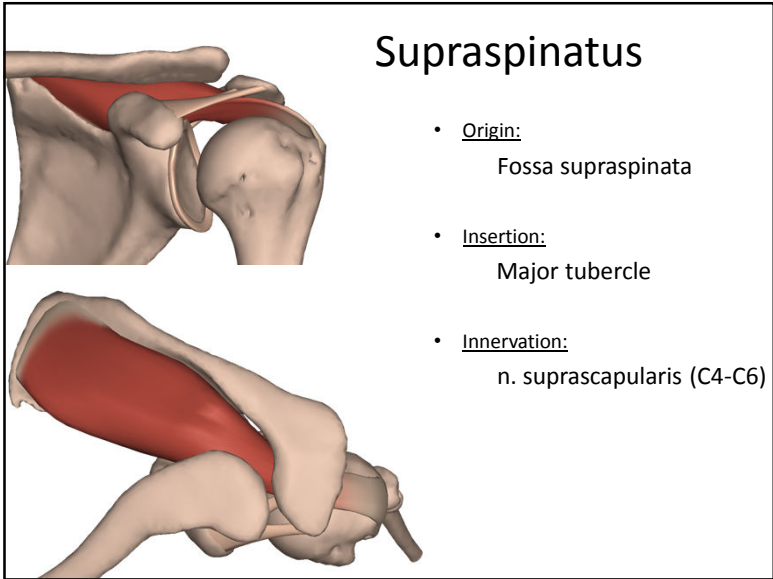
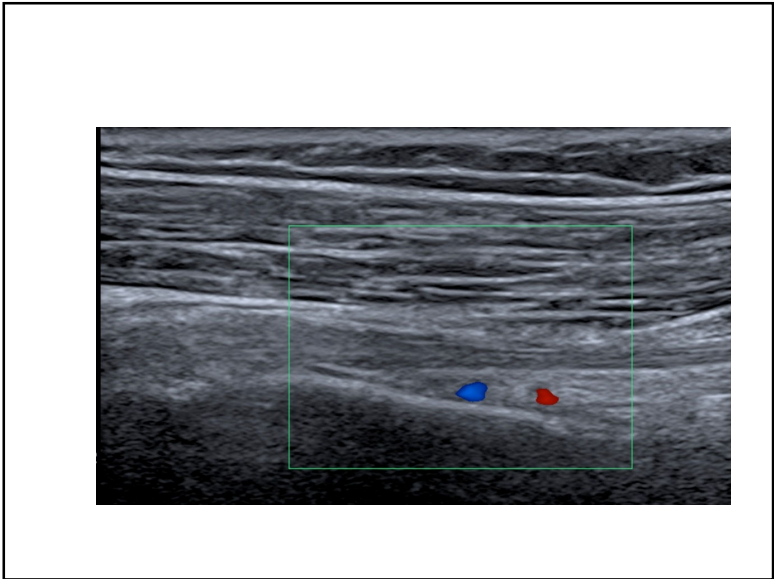
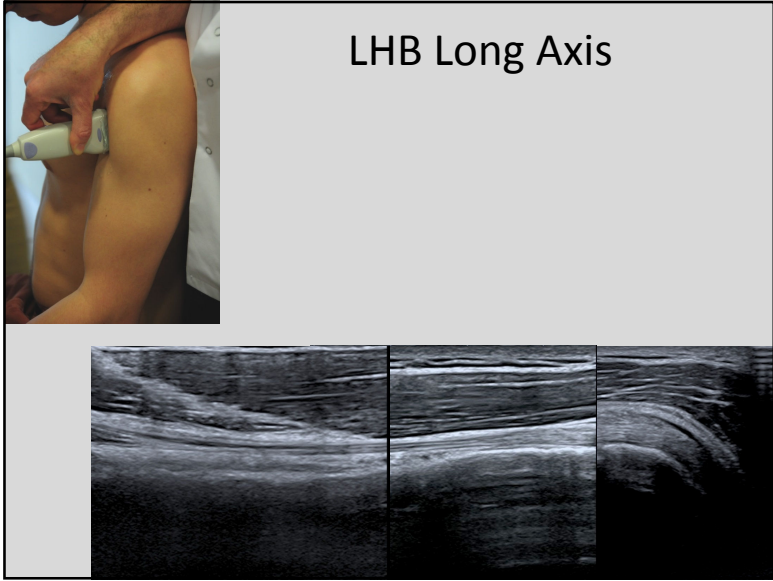
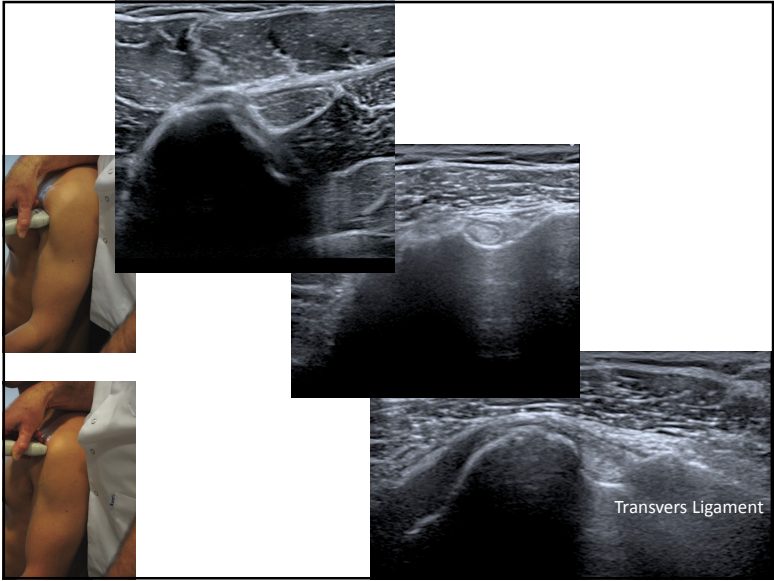
Subscapularis



Long axis







Modified Crass
Midleton



Modified Crass

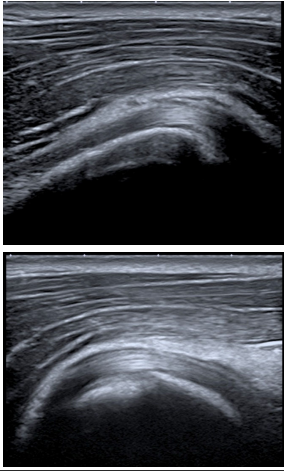
Crass

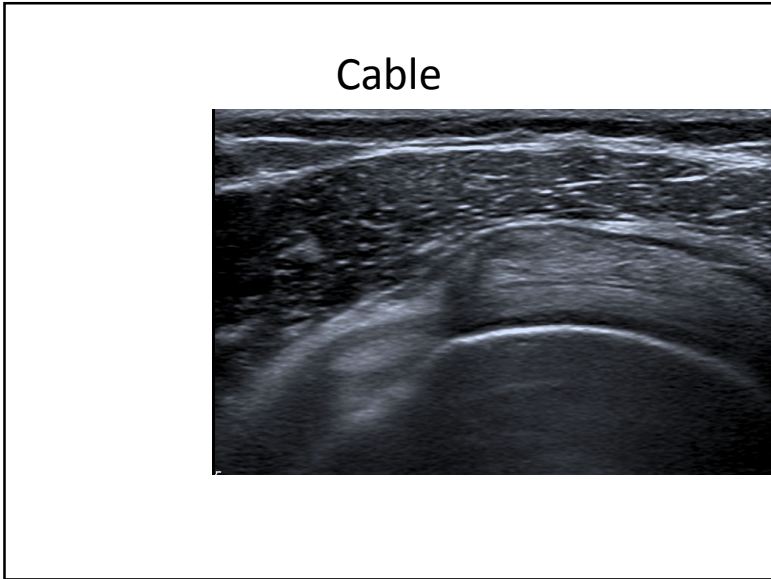
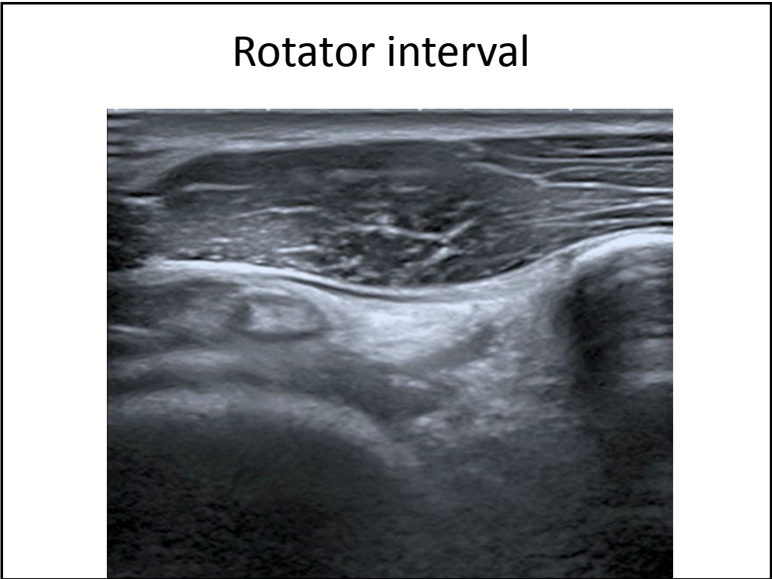
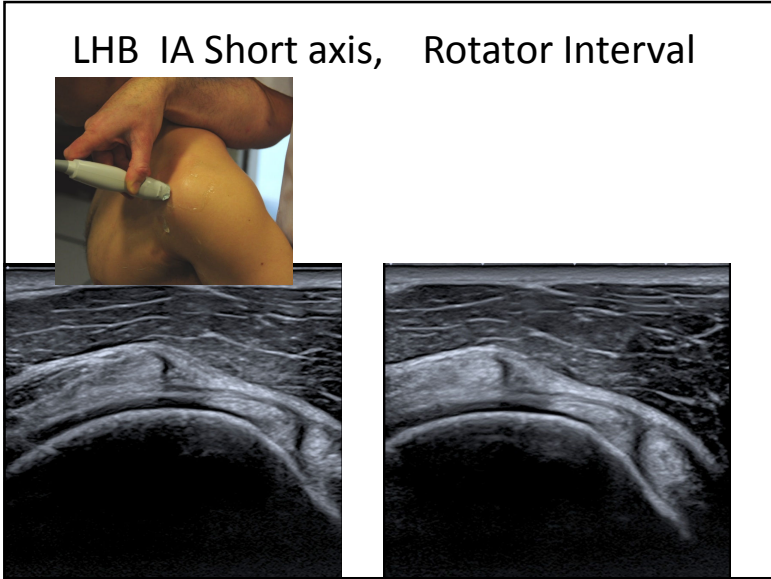
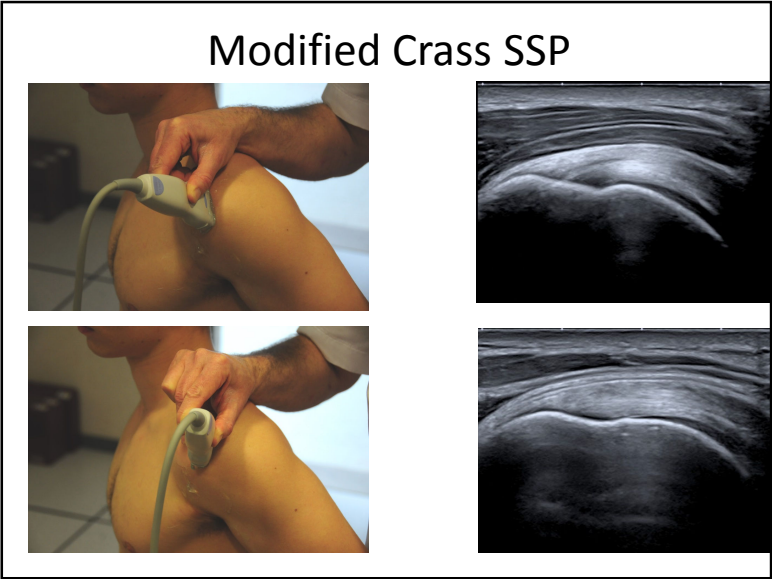


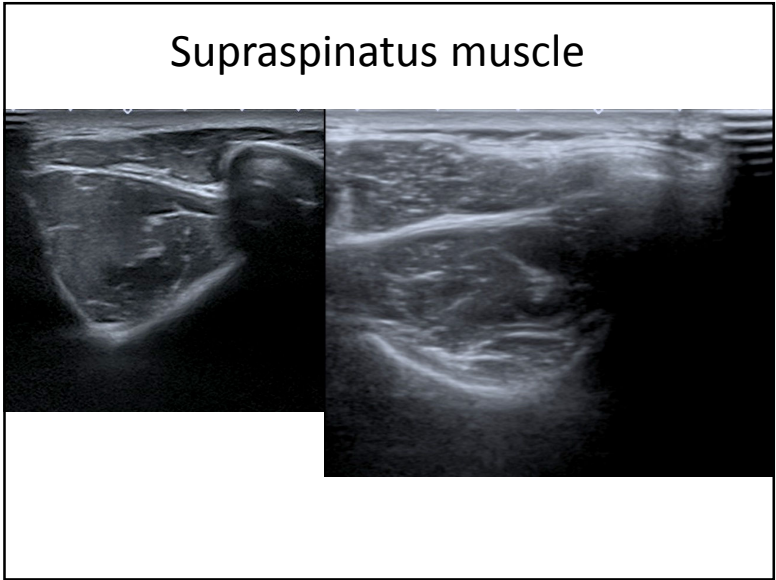
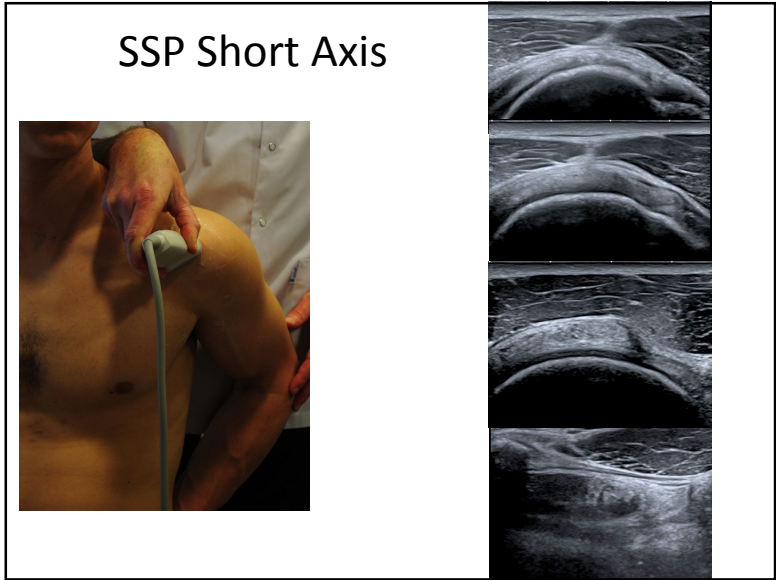
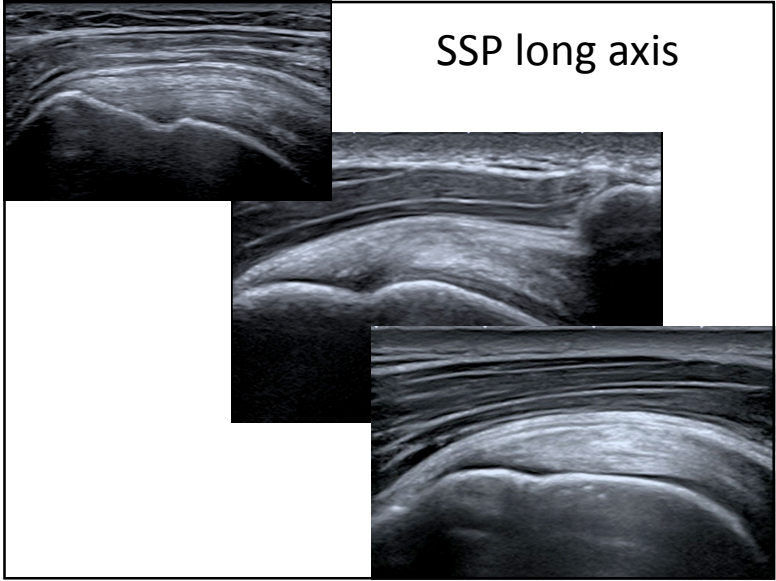
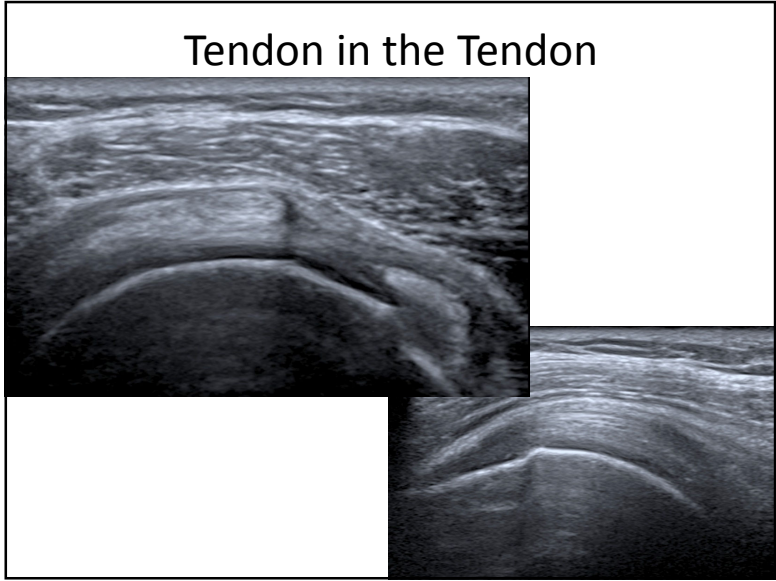
Neutral position



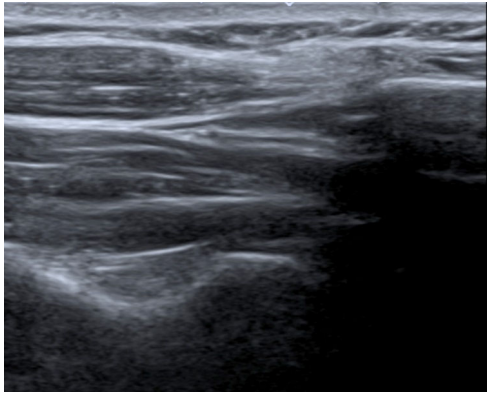
Modified Crass LHB IA



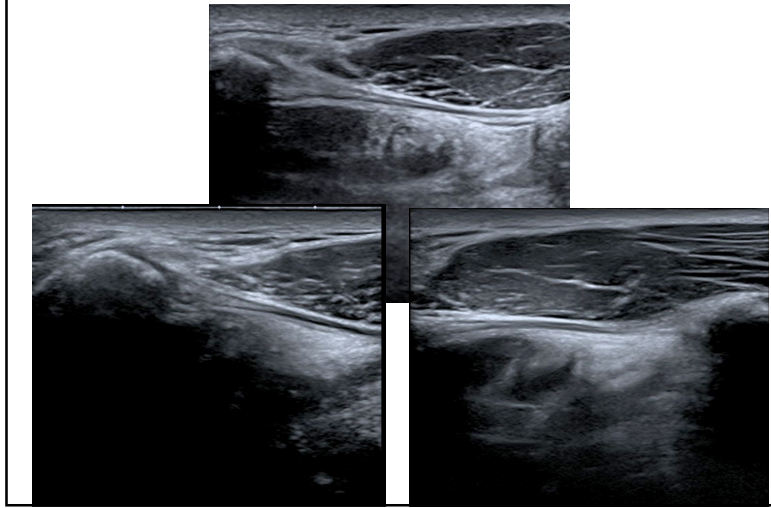




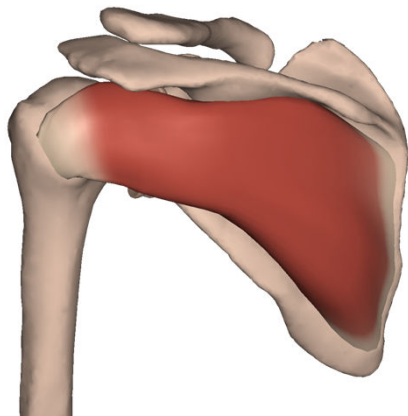
Suprascapular Notch



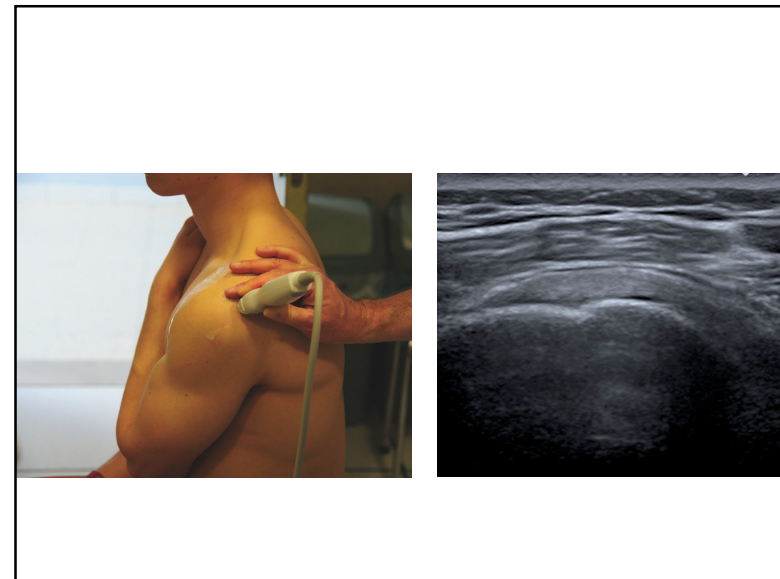
CAL



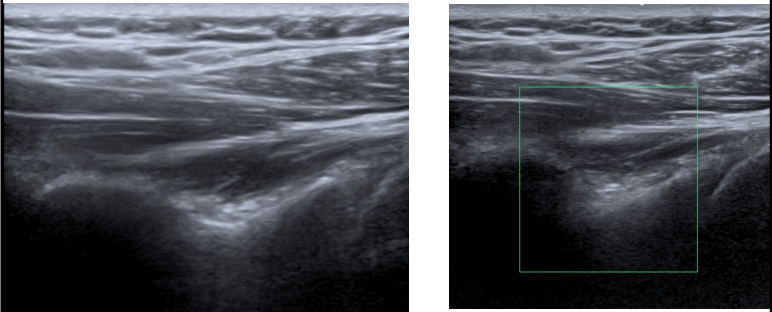
Infraspinatus



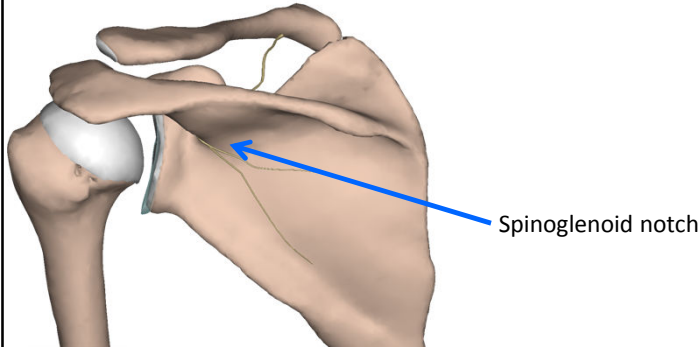
- Origin:
Fossa infraspinata
- Insertion:
Major tubercle
- Innervation:
n. suprascapularis (C4-C6)



Glenoid Notch

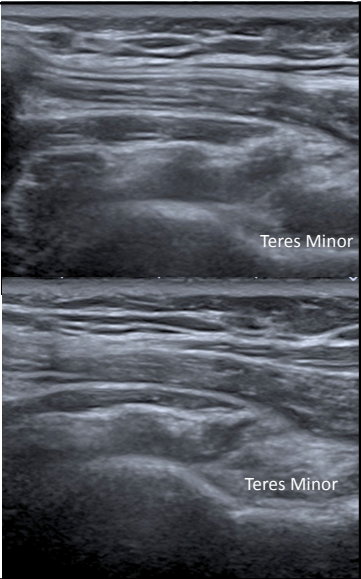


Suprascapular nerve

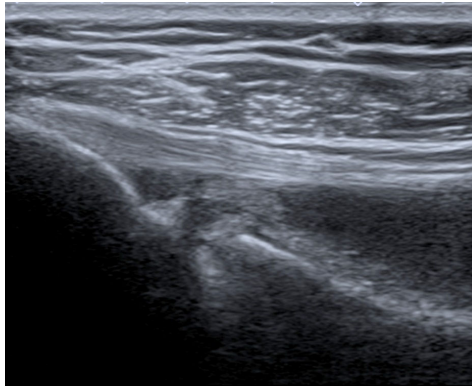


Infraspinatus

ISP short axis

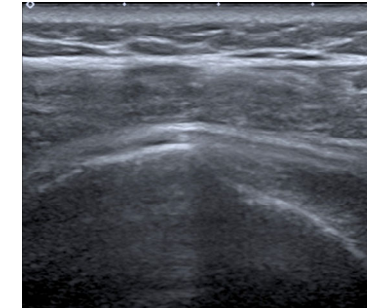
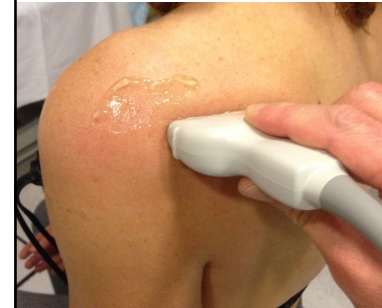
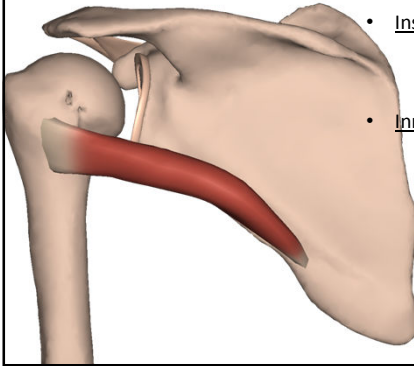


Infraspinatus exorotation arm

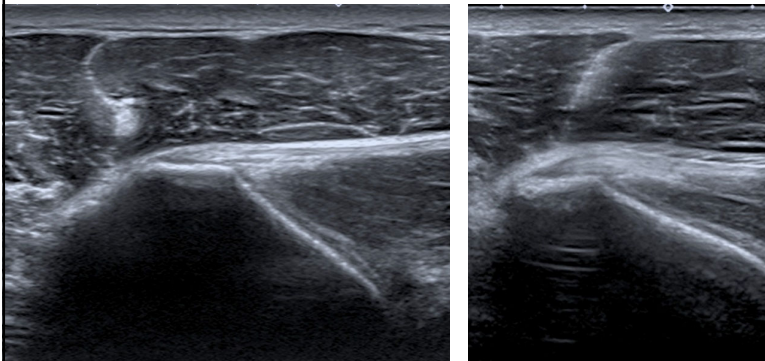


Teres minor

- Origin:
Lateral border posterior scapula
- Insertion:
Inferior part tuberculus majus
- Innervation:
n. axillaris (C5-C6)

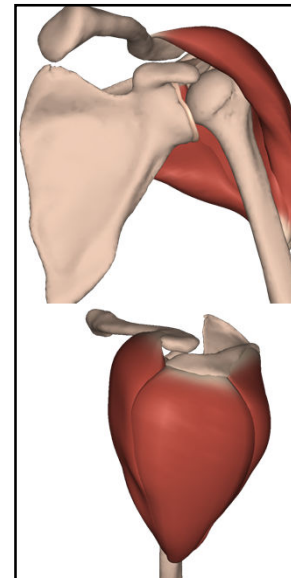


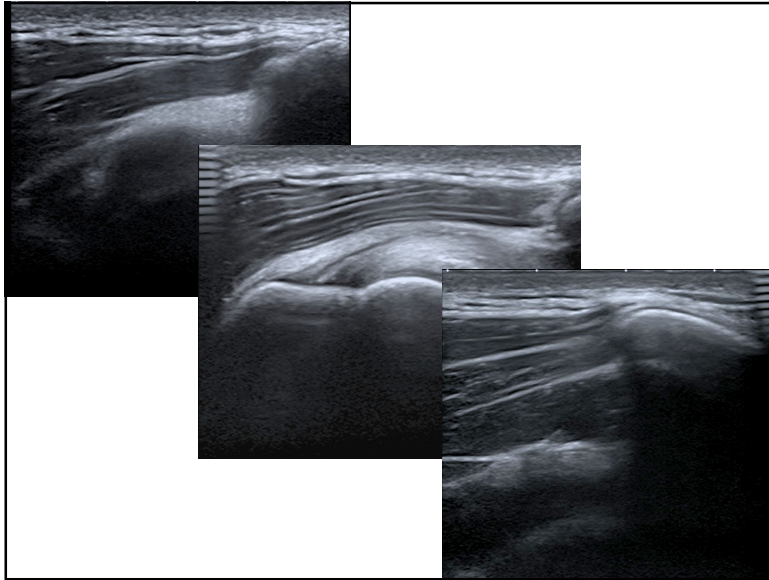
Teres minor exorotation



Deltoid

- Origin:
clavicula (p clavicularis)
acromion (p acromialis)
spina (p spinalis)
- Insertion:
tuberositas deltoidea
- Innervation:
n. axillaris (C4-C6)
(part of p clavicularis: rr. pectorales (C4-C5))





Teres major

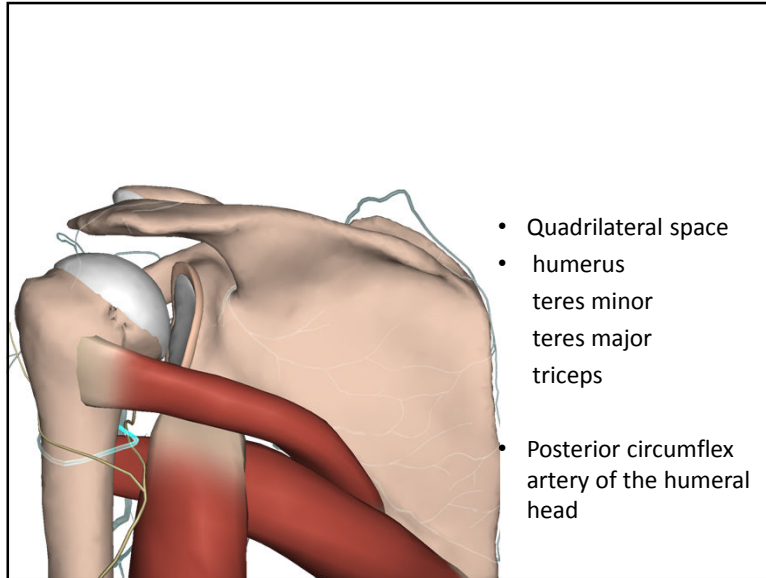
- Origin:
lateral border posterior scapula
inferior part
- Insertion:
crista tuberculi minoris
(with LD)
- Innervation:
n. thoracodorsalis (C6-C8)

Axillary nerve

- Quadrilateral space
- humerus
teres minor
teres major
triceps
- Deltoid
- Teres minor

Axillary nerve Quadrilateral space

- Quadrilateral space
- humerus
teres minor
teres major
triceps
- Posterior circumflex artery of the humeral head



Dynamic Impingement

- Anterior Impingement
- Subacromial Impingement
- CAL Impingement
- Posterior joint dynamic

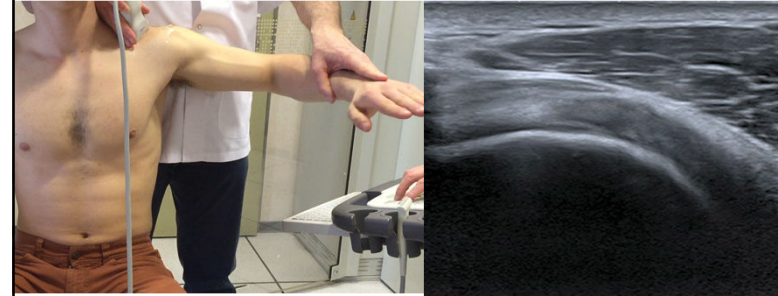
Anterior Impingement



Subacromial Impingement



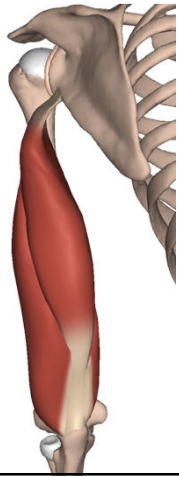
Impingement CA Ligament



Arm muscles

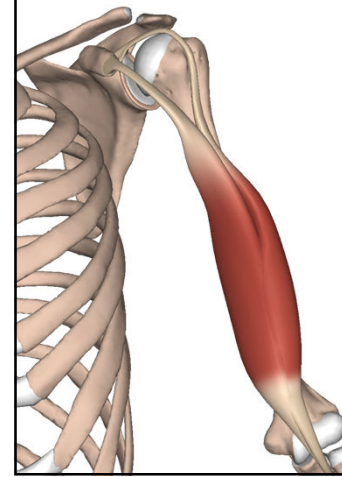
- Triceps brachii
- Biceps brachii
 - Long head
 - Short head
- Coracobrachialis
- Brachialis

Triceps brachii



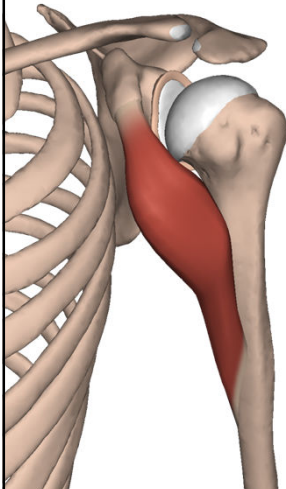
- Origin:
 - Long head: Tuberculum infraglenoidale
 - Medial, Lateral head: Posterior humerus
- Insertion: Olecranon
- Innervation: n. radialis (C7-C8)

Biceps brachii



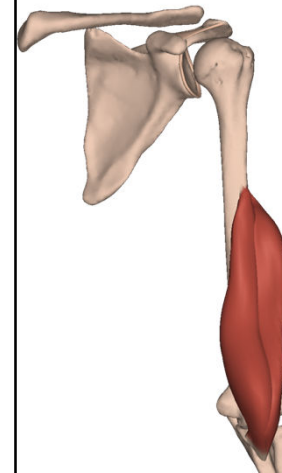
- Origin:
 - Short head: Coracoid
 - Long head: Tuberculum supraglenoidale Labrum
- Insertion: Tuberositas radii
Lacertus fibrosus medially
- Innervation: n. musculocutaneus (C6-C7)

Coracobrachialis



- Origin: Coracoid
- Insertion: Medial humerus
- Innervation: n. musculocutaneus (C6-C7)

Brachialis



- Origin: Distal humerus
- Insertion: Tuberositas ulnae, joint capsule
- Innervation: n. musculocutaneus (C6-C7)
n. radialis (small lateral part)